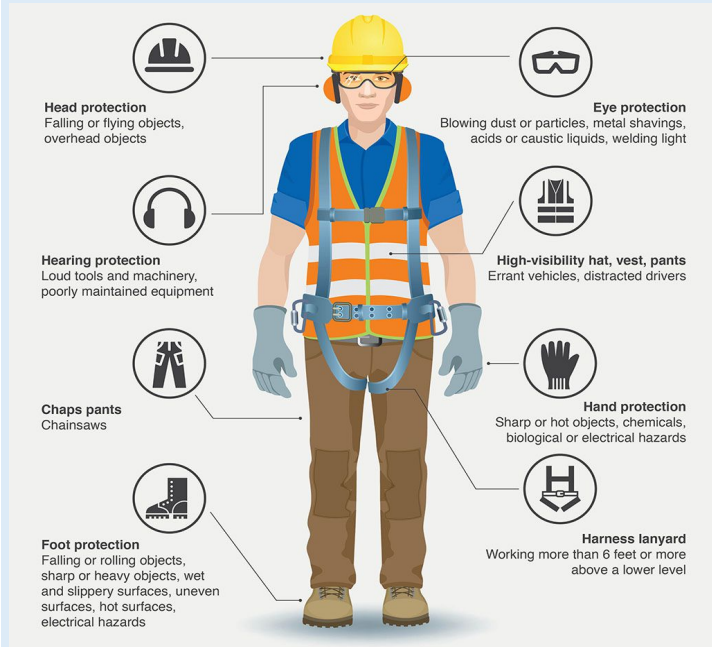


A culture of safety in the workplace refers to positive attitudes toward keeping employees safe while they do their jobs. Safety culture is often important in work environments with a more frequent chance of hazards, like construction or manufacturing. Effective safety culture includes positivity and proactivity.

## Personal Protective Equipment (PPE)



## Follow Environmental Guidelines



## Ladder Safety



## No Crowding inside the Site Perimeter



## Keep the Work Area



## Lifting Precautions



## Proper Site Training

